

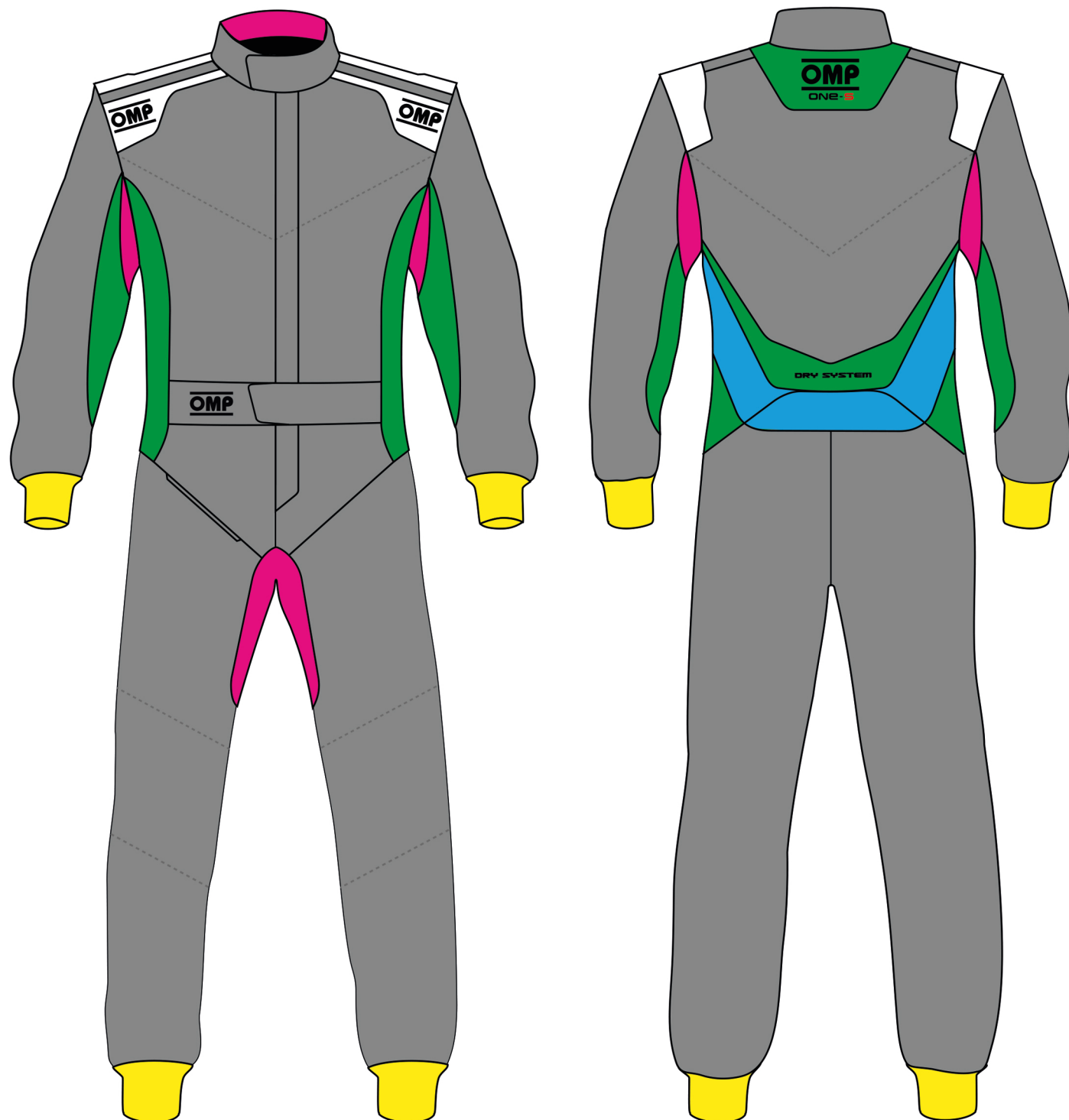


SUIT CUSTOMISATION TUTOR



IA01860

NEW STANDARD FIA 8856-2018



- Available from March 2020
- Available from April 2020

GREY AREA >60% MAIN ASSEMBLY MICROFIBRA FABRIC

WHITE AREA FOR SHOULDER STRIPES A DIFFERENT COLOUR MUST BE USED

WHITE X/500/020	ROYAL BLUE X/500/041	NAVY BLUE X/500/042	YELLOW X/500/055	RED X/500/061	BLACK X/500/071	SILVER X/500/080	ANTHRACITE X/500/082	GREY X/500/425C	ORANGE X/500/090
--------------------	--------------------------------	-------------------------------	----------------------------	-------------------------	--------------------	---------------------	--------------------------------	---------------------------	----------------------------

GREY AREA <40% LIGHT FABRIC

WHITE X/133/020	ROYAL BLUE X/133/041	NAVY BLUE X/133/042	RED X/133/061	BLACK X/133/071	SILVER X/133/080	DARK GREY X/133/082	GREY X/133/082
CYAN X/133/244	FLUO GREEN X/133/039	DARK GREEN X/133/033	FLUO YELLOW X/133/099	GREEN X/133/032	ORANGE X/133/091	GOLD X/133/002	YELLOW X/133/055

BLUE AREA STRETCH FABRIC

WHITE X/608/020	ROYAL BLUE X/608/041	NAVY BLUE X/608/042	RED X/608/061	DARK GREY X/608/082	BLACK X/608/071	SILVER X/608/080	FLUO YELLOW X/608/099
--------------------	--------------------------------	-------------------------------	-------------------------	-------------------------------	--------------------	---------------------	---------------------------------

PINK AREA INTERLOCK FABRIC

WHITE X/102/020	SILVER X/102/081	ROYAL BLUE X/102/041	NAVY BLUE X/102/042	YELLOW X/102/051	RED X/102/061	ECRÛ X/102/028	DARK GREY X/102/082	BLACK X/102/071	FLUO YELLOW X/102/099
--------------------	---------------------	--------------------------------	-------------------------------	----------------------------	-------------------------	-------------------	------------------------	--------------------	---------------------------------

YELLOW AREA WRIST AND ANKLE CUFFS FABRIC

WHITE X/105/N/020	SILVER X/105/N/081	ROYAL BLUE X/105/N/041	NAVY BLUE X/105/N/042	RED X/105/N/061	ECRÛ X/105/N/022	DARK GREY X/105/N/082	BLACK X/105/N/071
----------------------	-----------------------	----------------------------------	---------------------------------	---------------------------	---------------------	--------------------------	----------------------

GREEN AREA DRY SYSTEM FABRIC

WHITE X/600/020	ROYAL BLUE X/600/041	NAVY BLUE X/600/042	RED X/600/061	DARK GREY X/600/082	BLACK X/600/071
--------------------	--------------------------------	-------------------------------	-------------------------	------------------------	--------------------

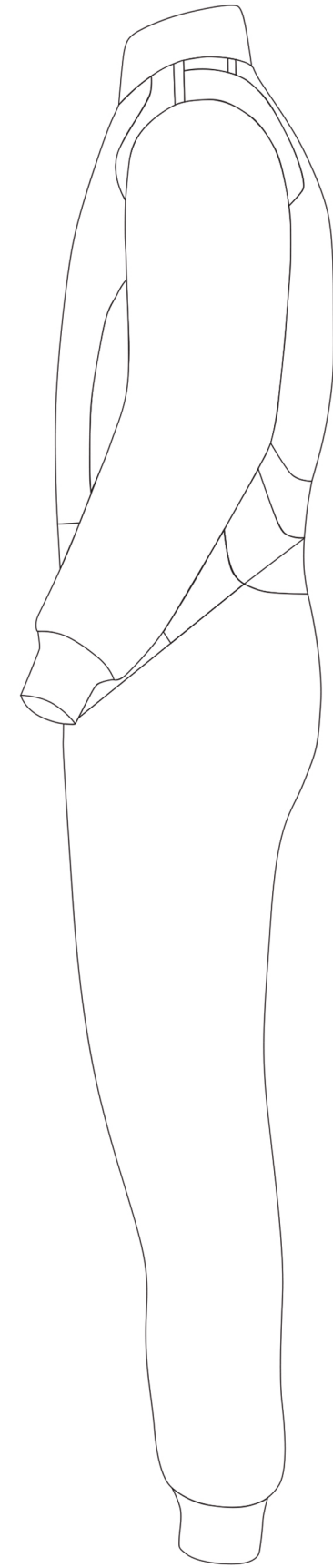
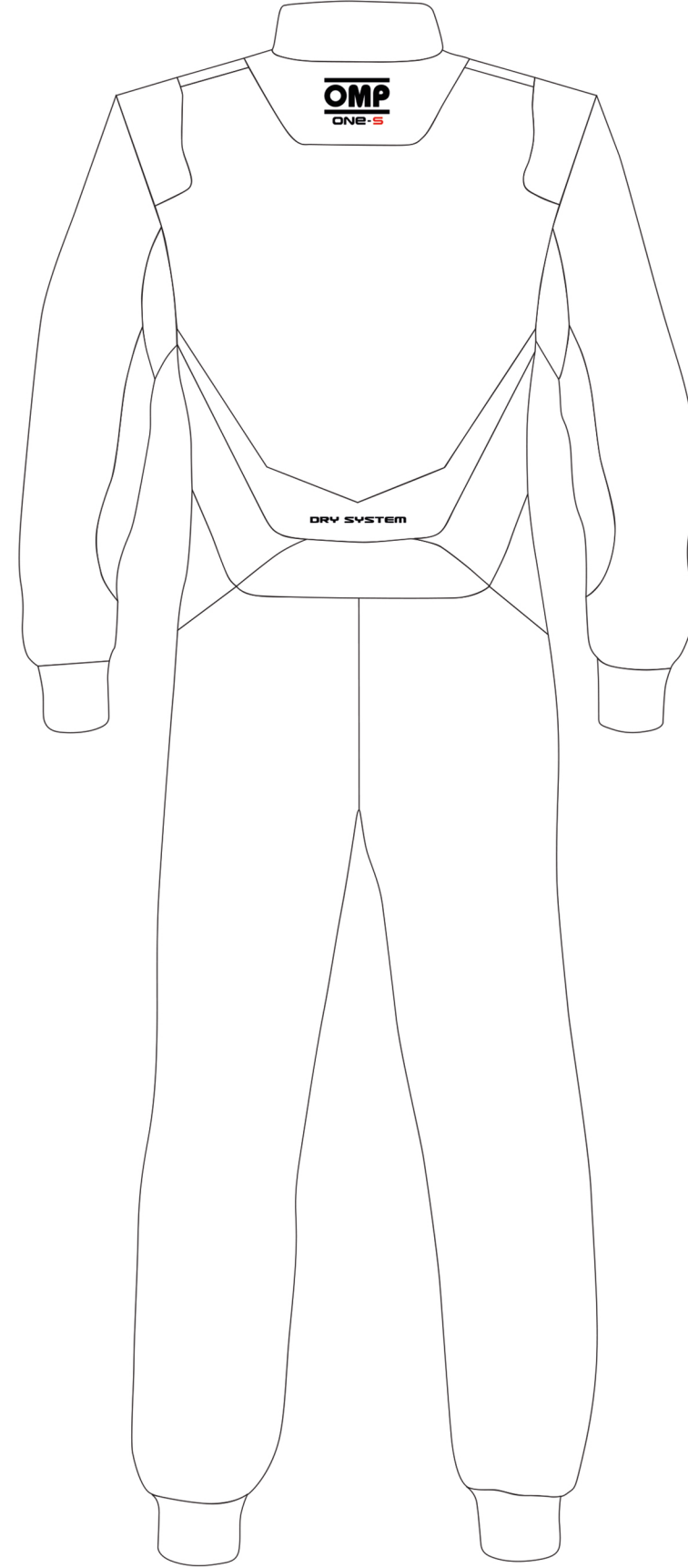
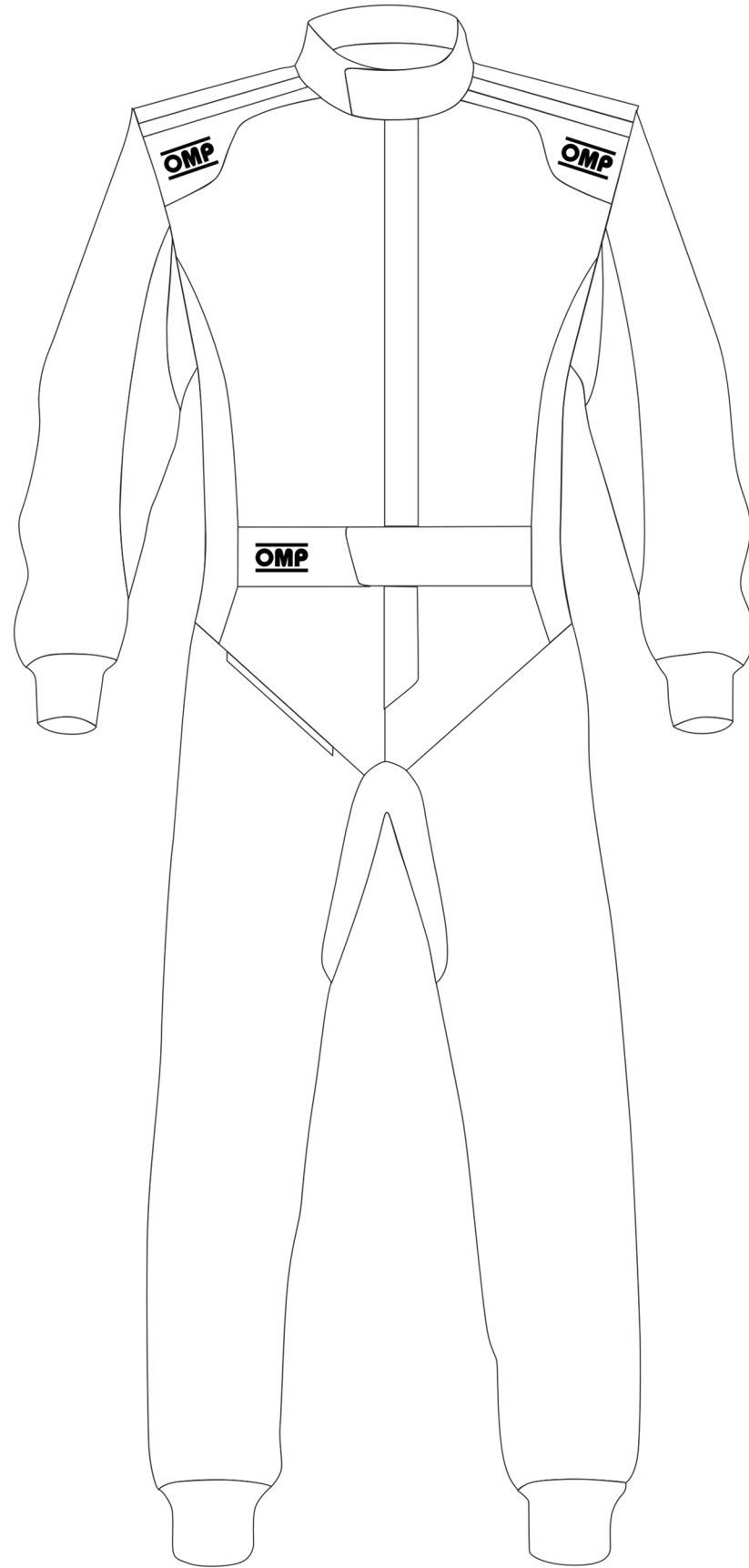
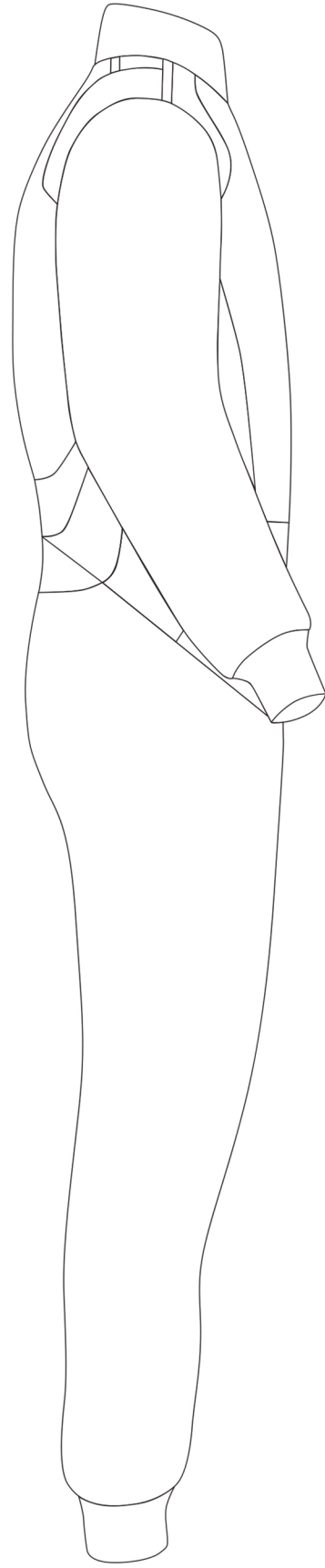


CUSTOMER: _____

TEAM: _____

DRIVER NAME: _____

CUSTOMISED SUIT CONFIGURATOR



IA01860 ONE-S

© OMP RACING SPA - ALL RIGHTS RESERVED

DATE: _____ REV. _____

THIS DESIGN IS THE INTELLECTUAL PROPERTY OF OMP RACING SPA - ANY REPRODUCTION WITHOUT PERMISSION WILL BE PROSECUTED TO THE FULLEST EXTENT OF THE LAW. By approving this sketch, the customer acknowledges that, during the process of manufacturing, variations may occur in colours and other minor aspects, because of the use of different technologies for the acquisition and reproduction of images, and for the making of the suit itself. OMP is not responsible for such variations and deviations. For further information: www.ompracing.com