



# SUIT CUSTOMISATION TUTOR



NEW STANDARD FIA 8856-2018



## GREY AREA MAIN ASSEMBLY

## WHITE AREA

FOR SHOULDER STRIPES  
A DIFFERENT COLOUR MUST BE USED

CYAN X/147/244	NAVY BLUE X/147/042	RED X/147/061	WHITE X/147/020	SILVER X/147/083	ANTHRACITE X/147/084	BLACK X/147/071	TIFFANY X/147/318C
PINK X/147/226CS	YELLOW X/147/051	FLUO YELLOW X/147/099					

## ORANGE AREA BREATHABLE SYSTEM

DARK GREY X/603/082	NAVY BLUE X/603/042
------------------------	------------------------

## PINK AREA INTERLOCK FABRIC

WHITE X/102/020	SILVER X/102/081	ROYAL BLUE X/102/041	NAVY BLUE X/102/042	RED X/102/061	ECRÙ X/102/028	DARK GREY X/102/082	BLACK X/102/071	FLUO YELLOW X/102/099
--------------------	---------------------	-------------------------	------------------------	------------------	-------------------	------------------------	--------------------	--------------------------

## YELLOW AREA WRIST AND ANKLE CUFFS FABRIC

WHITE X/105/N/020	SILVER X/105/N/081	ROYAL BLUE X/105/N/041	NAVY BLUE X/105/N/042	RED X/105/N/061	ECRÙ X/105/N/022	DARK GREY X/105/N/082	BLACK X/105/N/071
----------------------	-----------------------	---------------------------	--------------------------	--------------------	---------------------	--------------------------	----------------------

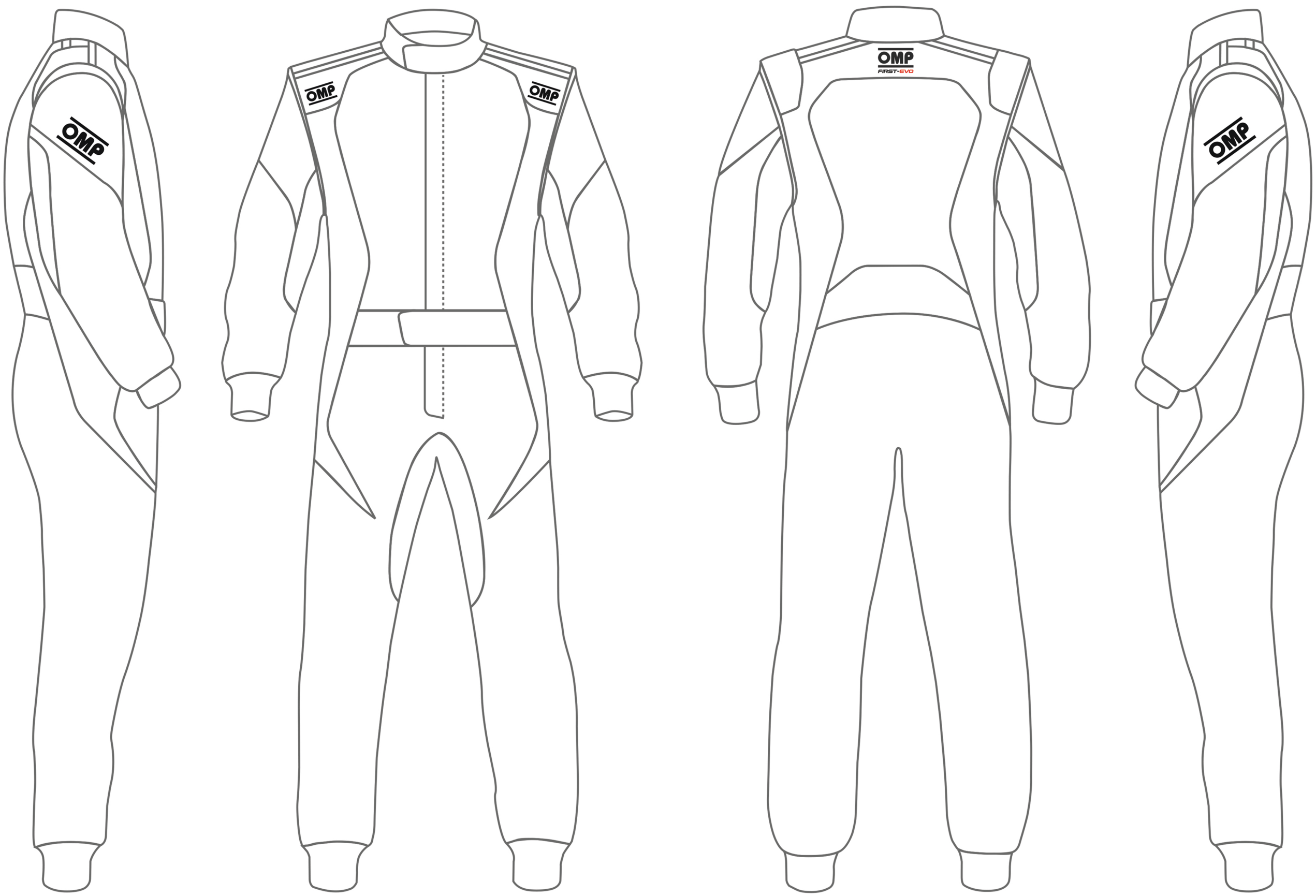


CUSTOMER: \_\_\_\_\_

TEAM: \_\_\_\_\_

DRIVER NAME: \_\_\_\_\_

CUSTOMISED SUIT CONFIGURATOR



IA01854E **FIRST-EVO**

© OMP RACING SPA - ALL RIGHTS RESERVED

THIS DESIGN IS THE INTELLECTUAL PROPERTY OF OMP RACING SPA - ANY REPRODUCTION WITHOUT PERMISSION WILL BE PROSECUTED TO THE FULLEST EXTENT OF THE LAW. By approving this sketch, the customer acknowledges that, during the process of manufacturing, variations may occur in colours and other minor aspects, because of the use of different technologies for the acquisition and reproduction of images, and for the making of the suit itself. OMP is not responsible for such variations and deviations. For further information: [www.ompracing.com](http://www.ompracing.com)

DATE: \_\_\_\_\_

REV. \_\_\_\_\_